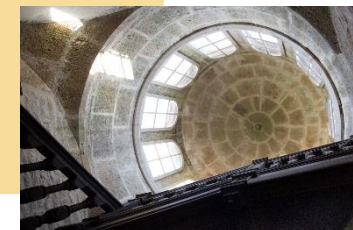




# Discovering the



# Castle of Pailly



Haute-Marne, 52



### Information and reservation

Association Renaissance Château du Pailly



5 rue de la Nouette  
52600 Le Pailly



chateaudupailly@outlook.fr

www.renaissancechateaudupailly.com

06.03.84.45.12

Renaissance  
Château du Pailly



## AN ILLUSTRIOUS OWNER

The Castle of Pailly was built in the middle of the 16th Century. It was the Century of discovery, which also saw the affirmation of royal power, great economic prosperity, refined culture and architectural renewal. From amidst this climate of passion and beauty, the châteaux stand as a testament to a striking period in French history, and to the mark made by its owner, the legendary Gaspard de Saulx-Tavannes (1509-1573).

Originally from Dijon, Gaspard left the family home at the age of 13 to follow his uncle, the “Colonel des Lansquenets des Bandes Noires”. Gaspard passed through the Alps with the army of Francis I. Following the disaster of Pavia, he was taken prisoner along with the king. No sooner was he freed than he continued the fight against Charles Quint. Later, his adventurer uncle bequeathed him his name and his assets, and he accepted the place of archer in the company of the great horseman Galliot. Thus began the military career of the man who would become one of the greatest personalities of the kingdom, General Governor of Burgundy, Admiral of the Levant and Advisor to the King

**A castle had already existed in Le Pailly since the Middle Ages, at the foot of the plateau of Langres. It was a dependency of the Langres diocese, and the Resaigne river ran the length of estate. It was partly destroyed during the Hundred Years' War. Sold to the Saulx Family by the Bishop of Langres, Gaspard de Saulx-Tavannes and his wife carried out renovation on this castle from 1563 to 1573. This renovation retained the defensive aspects of the castle (5 drawbridges, 10 cannons etc) and the same time incorporated the magnificence of Renaissance architecture. After some moments of glory, as well as some unhappy periods, it was classed as a Historic Monument in 1921 and finally became a state owned property in 1963. Management of the castle was entrusted to DRAC of Champagne Ardenne.**

**Jewel of the Renaissance”, the Château du Pailly was renovated between 1563 and 1573, on the site of an old castle, for the “very noble and highly famed” Gaspard de Saulx-Tavannes, Marshal of France, comrade in arms to King Francis I**



The splendour of this castle is sure to charm you during your visit. At the sides of the medieval keep, pavilions unfurl the ostentation of Renaissance architecture (mullioned windows, lion heads, scrolls, foliage scrolls, fluted columns...)

The interior retains magnificent decoration: frescos, French-style ceilings, marble chimneys...

The stairway of honour will lead you to the keep, before you go the wander through the gardens of this castle, one to the most prestigious Renaissance masterpieces in Champagne-Ardenne.

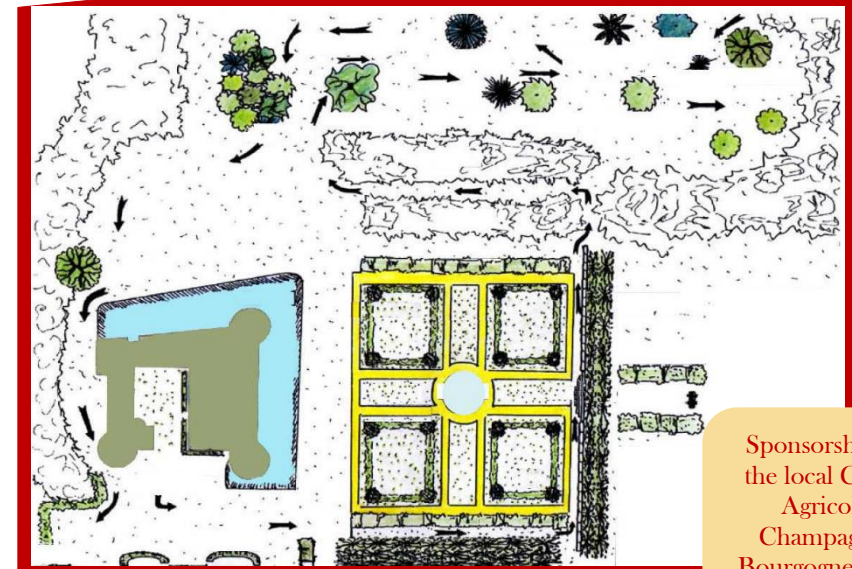
## THE CASTLE GARDENS

The Renaissance-inspired formal garden is embellished in the center by a circular raised fountain, the meeting point of eight medial paths that mark out four flowerbeds.

To the North and the East, a walk of sculpted lime trees surrounds the garden. Raised by few steps, the North walk forms a terrace. Its stone support is decorated with espaliers and preceded by a hedged border. The central viewpoint ends in a pergola, from which you can contemplate the North façade of the castle.

To the North-West, there is a large open space with groups of trees. Close to the castle, some of the groups contain rare trees such as the walnut, the catalpa and the pink horse chestnut. It makes up the landscaped part of this garden.

Conversely, the further your gaze goes from castle, the more the plants are made up of local species, the park progressively melts into an idealized place of nature.



Drawing taken from a document produced by the CAEU de Haute-Marne

Sponsorship of the local Crédit Agricole Champagne-Bourgogne bank